

Crew
Organization
&
Leadership



Objectives

- How the Crew is organized
- Officers' responsibilities
- Role of adults assisting the Crew



Small Crew or Big Crew

- Different Organizational Styles
- Small Crew
 - Consensus driven
 - Narrower range of activity interests
 - Few youth to "carry the load"
- Large Crew
 - Choices made via democratic method
 - Wide range of interests
 - Requires greater structure to manage size of group and balance all competing desires



Crew Organization

**CREW
PRESIDENT**

**VICE
PRESIDENT
(ADMIN)**

**VICE
PRESIDENT
(PROGRAM)**

TREASURER

SECRETARY

Members

**ACTIVITY
CHAIRS**

Members



Officers' Responsibilities

- Lead the Crew
- Program reflects Crew's needs & desires
- Uphold BSA & Crew standards
- Uphold Chartering Orgn's standards
- Work with adult advisors
- Create a fun environment
- Plan, develop, and execute the program
- Evaluate Crew's success



Jamie S. - Crew 2000

"The Crew needs a common purpose...we created a mission statement that includes the purposes for which our crew exists. I view the leadership positions within the crew as the glue that keeps the crew together."



Sarah S. - Crew 520

“Organization is what holds Venturing together...which is why we're more than simply a group of friends who like to do fun stuff. If we want to do something, we'll plan it and go do it. But, that's only possible because of organization.”



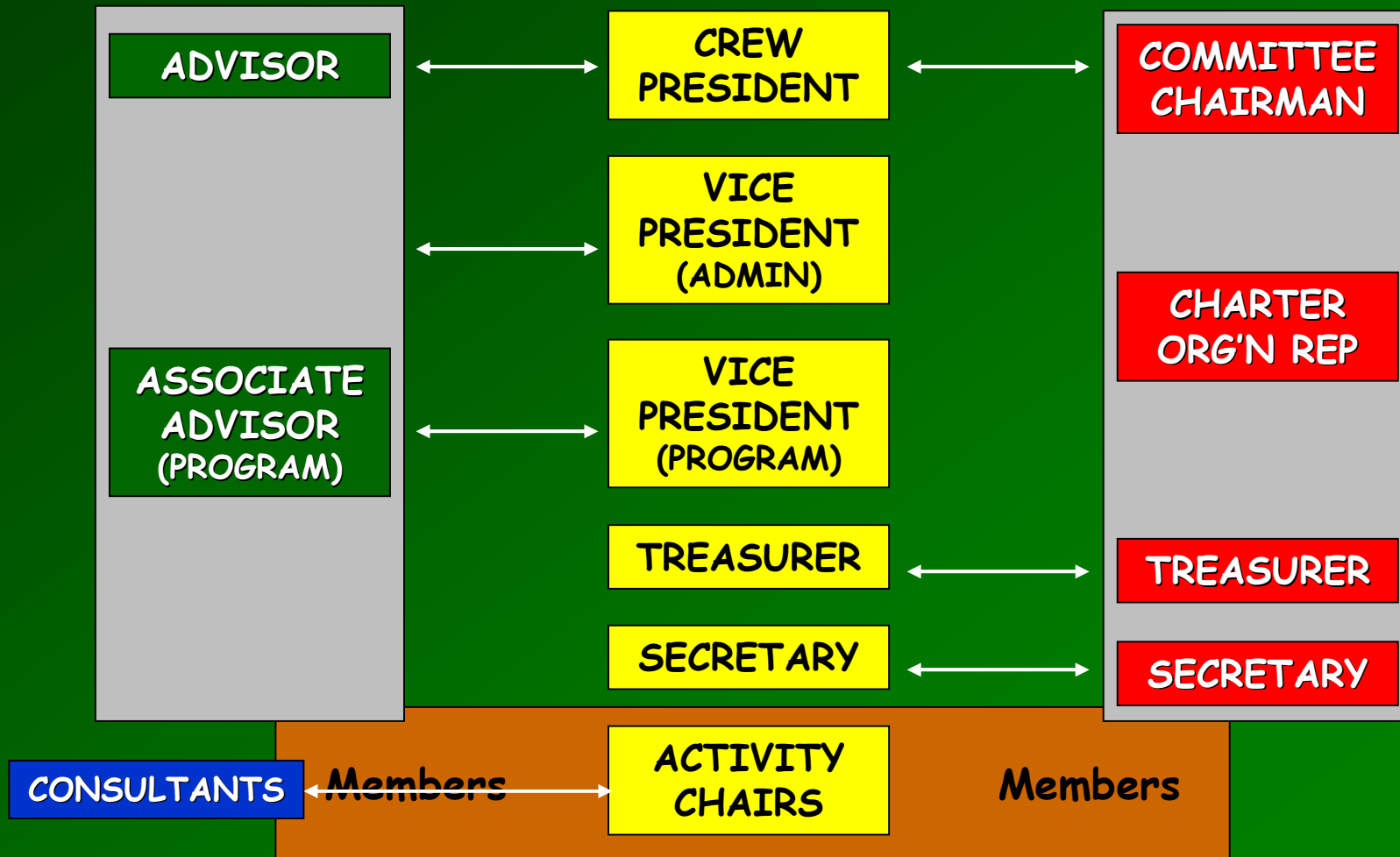
Nathan C. - Crew 1976

When asked what was the one thing youth leadership wanted,

“Let us fail, not on the big things, but so that we learn to organize, plan, and lead better for the next time.”



Adult Roles





Advisor's Responsibilities

- Trains Crew officers
- Helps plan annual program
- Coaches officers
- Helps obtain adult help & resources
- Participates in all Crew meetings, officer meetings, committee meetings
- Conducts Crew Officers' Seminar
- Coaches, mentors, & models desired leadership



Committee Responsibilities

- Ensures quality program & capable adult leadership
- Guides & supports money-earning projects
- Helps plan the budget & account for funds
- Completes & maintains the PCI
- Secures equipment, facilities & resources
- Reviews, supports, & approves the crew's program plan



Summary

- Youth-led Crew
- Adults not leaders...Advisors
- Partnership between youth & adults
- Grow future leaders

...to help young people become caring,
responsible adults